

# Sustainability Report

---



# Agenda

## Topics

---

Why?	3	Future Plans	8
Recycling	5	<b>Next steps</b>	09
Solar	6	<b>Conclusion</b>	10
Course	7		

# Why Should we be Sustainable

---



## Environmental Stewardship

Golf courses occupy large areas of land; how they're managed impacts ecosystems, wildlife habitats and water resources.

Sustainability reduces negative impacts like excessive water usage, chemical runoff or energy waste.

## Economic Benefits

Energy-efficient buildings, renewable energy and smart irrigation reduce long-term operating costs.

Waste reduction and recycling lower disposal expenses.

Sustainability attracts eco-conscious members and sponsors.

# Why Should we be Sustainable



[Back to agenda page](#)

## Social Responsibility & Reputation

Members and visitors increasingly expect clubs to show commitment to the environment.

A sustainable clubhouse demonstrates leadership, building pride among members and trust within the community.

## Regulatory & Industry Trends

Many regions now are starting to have stricter rules around water use, an example of this is Yorkshire Water hose pipe ban in summer 2025.

More pesticides are becoming banned.

Industry bodies (like GEO Certified in golf) highlight sustainability as best practice.

# Recycling

From April 2025 we changed companies who collected our waste and recycling. New regulations came into place around food waste which didnt impact us due to the number of employees we have however we adopted this change.

As a result of our changes over 12 months we will save the below;

Food Waste – 3.9 tonnes waste and CO2 15.6 tonnes waste avoided

Glass Waste – 9.9 tonnes raw material saved and 4.8 tonnes CO2 saved

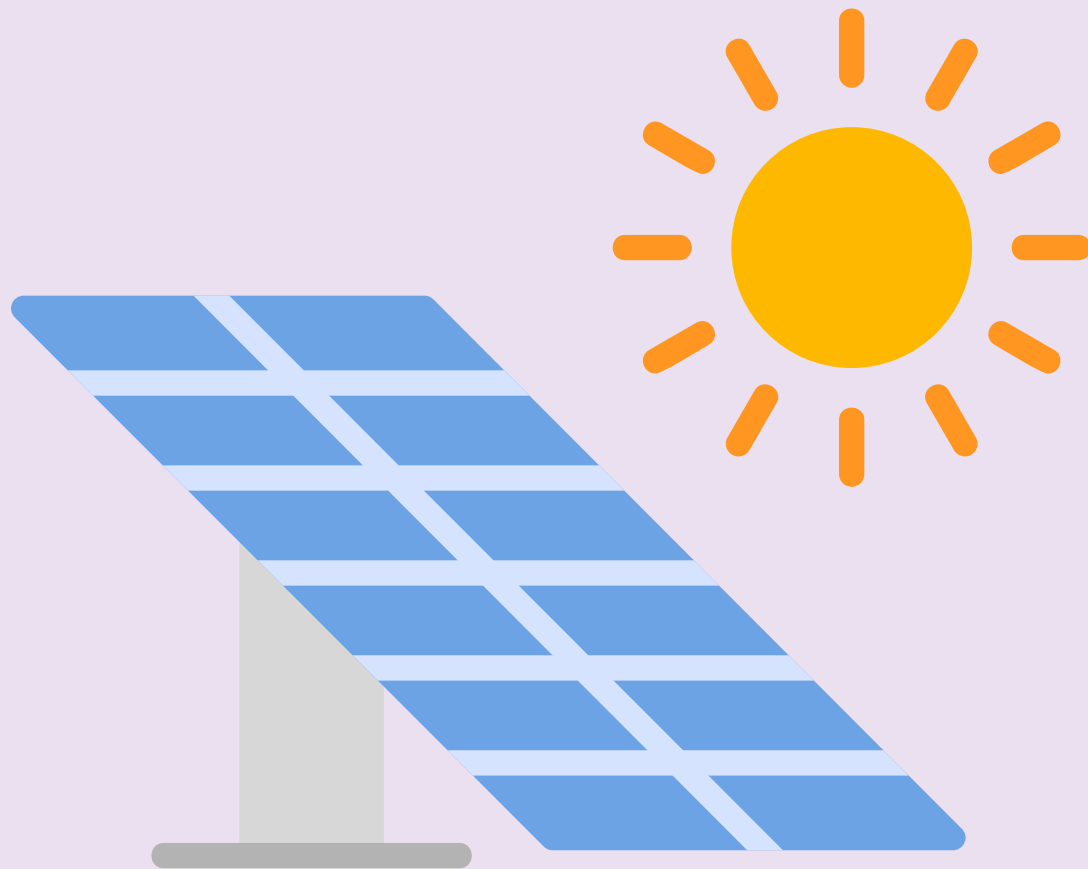
Mixed Waste – 2 tonnes saved

General Waste – 7.2 tonnes

Removal of paper towels in Gents toilets has saved 10000s in sheets of waste.



# Solar Panels



We have had solar panels for a number of years now on the roof of the club house. These panels over the last 12 months have produced 10007.4 Kwh. This is then sold back to the grid and the club offsets its energy bills by this payment.

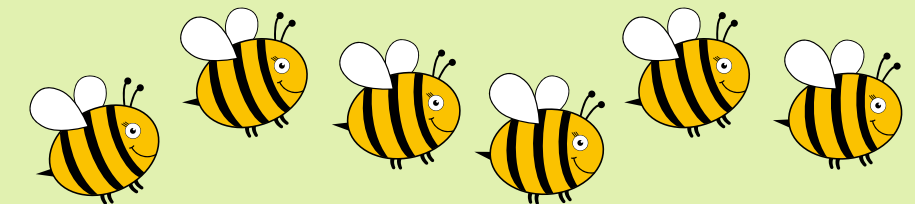


2024 a decision was made to not cut the grass of certain areas of the course. This would save on fuel used to cut and enhance the growth the wild flowers and improve wildlife. From this hives were installed and this has resulted in over 100 jars on honey produced.

A number Bug Houses have been installed around the course made from off cuts and other items off wood that would have been waste. These have all been successful with bugs/insects using them.

Wildflowers were planted around 7<sup>th</sup> tee and the natural growth of them on the old practice ground has resulted in bees being able to take the pollen.

# Course



# Future Plans

---

**As a club we are always looking for new ideas to be sustainable. At present we are looking at the following options;**

**Adding guttering and water butts to huts on 5<sup>th</sup>, 7<sup>th</sup> and 15<sup>th</sup>. this will allow us to water plants in that area without using mains water.**

**Planting 100s of trees on land the club owns which isn't in use at all. This will create a new woodland and encourage more wildlife.**

**Compost heaps will be constructed from old pallets, they will be discreetly located close to the garden areas on the course. They will provide areas for spent vegetation to be collected, generate homemade compost, and reduce the amount of fuel used in transported waste around the course.**

**The R&A have stated that the use of mains water will be banned for all golf courses in the not to distant future. We are looking at options of water capture from rainfall or bore holes.**

**We are also looking at the options installing solar panels on the greens shed or a wind turbine which would enable the building to be ran on natural resources and sell electricity back to the grid.**



# Conclusion

Every effort will be made to enhance all aspects of Teesside Golf Club and we believe by doing this plan the club will improve and also the impact we have on the land we use.

If any members have any knowledge in this area and would like to get involved please contact the office.