

Woodsome Hall Golf Club Dress Code

ACCEPTABLE

UNACCEPTABLE

Caps

Peak Caps must be worn with the peak at the front

Shirts

Shirts must have collar and sleeves and be tucked into trousers or shorts at all times

Trousers/Shorts

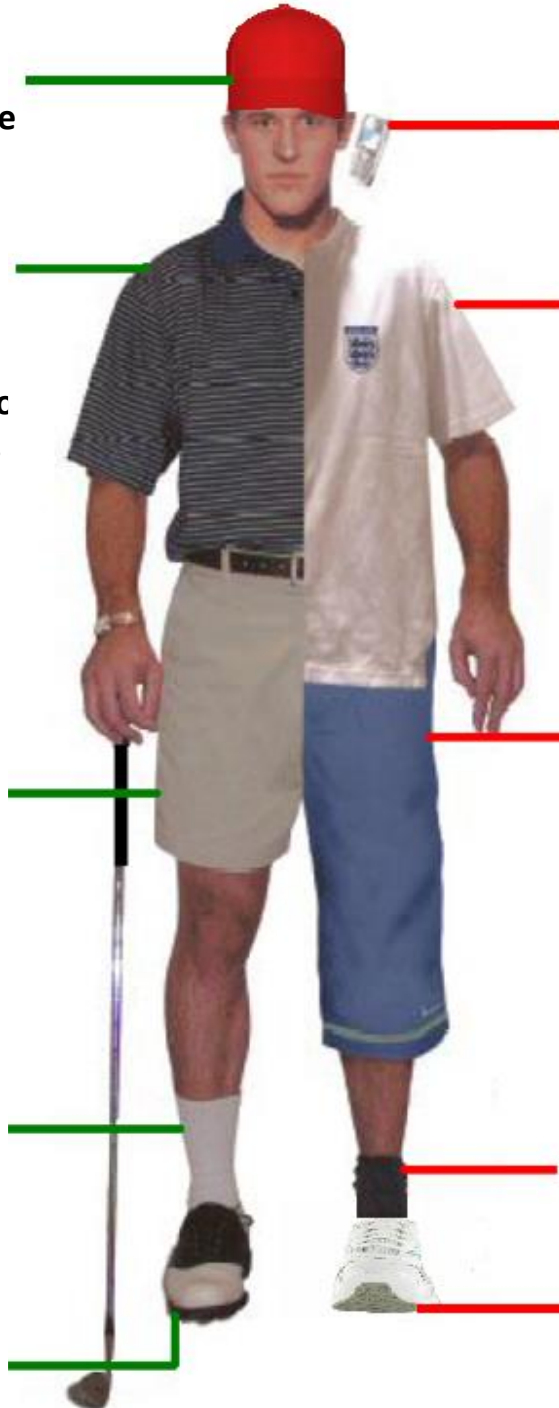
Knee length tailored shorts or long trousers

Socks

Knee length or predominantly white socks. Trainer socks allowed.

Shoes

Golf shoes



Use of mobile phones
on course (except in medical emergency)

Shirts

T shirts, vests
rugby/football shirts

Trousers/Shorts

Beach shorts
Rugby/Football shorts
Denim trousers and three quarter length shorts

Socks

Socks that are not predominantly white.

Shoes

Trainers or improper golf shoes, sandals, beachwear.

Failure to comply with the Dress Code may result in being asked to leave the clubhouse by a member of staff or club official. Please do not put our staff in a position where it is necessary for them to bring adherence to dress code to your attention.

Your understanding and cooperation in this is much appreciated
Enjoy your golf